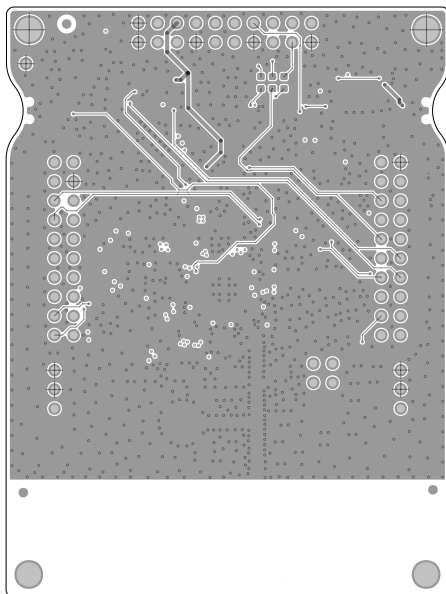
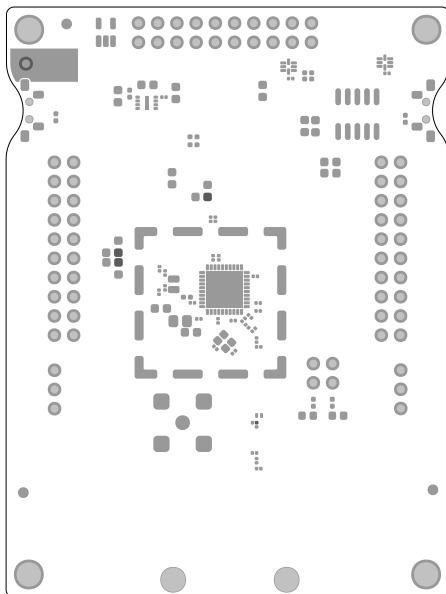


	TEXAS INSTRUMENTS	
	L 1	LP-EM-CC2745R10-01 Rev. A
	DATE: 2024-02-15	

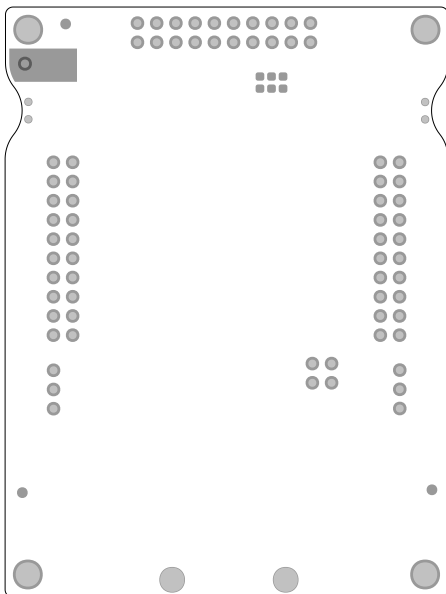
ART FILM - Bottom



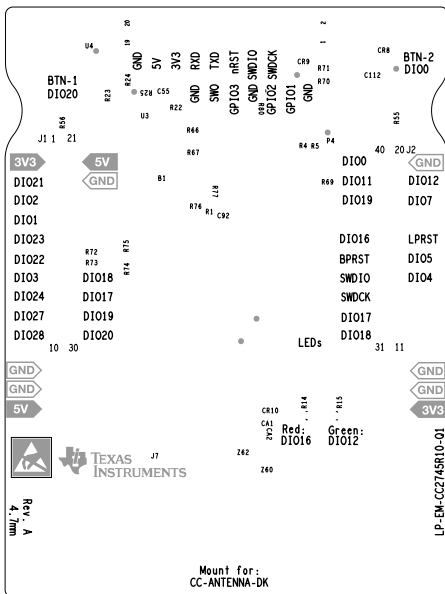
	TEXAS INSTRUMENTS	
	L4	LP-EM-CC2745R10-01 Rev. A
	DATE: 2024-02-15	



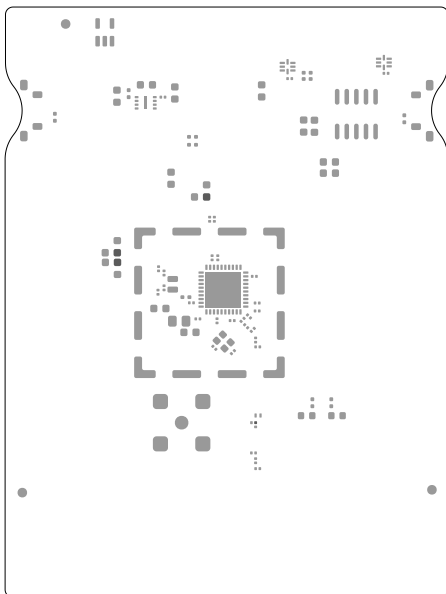
	TEXAS INSTRUMENTS	
	SM TOP	LP-EM-CC2745R10-01 Rev. A
	DATE: 2024-02-15	



	TEXAS INSTRUMENTS	
	SM BOT	LP-EM-CC2745R10-01 Rev. A
	DATE: 2024-02-15	

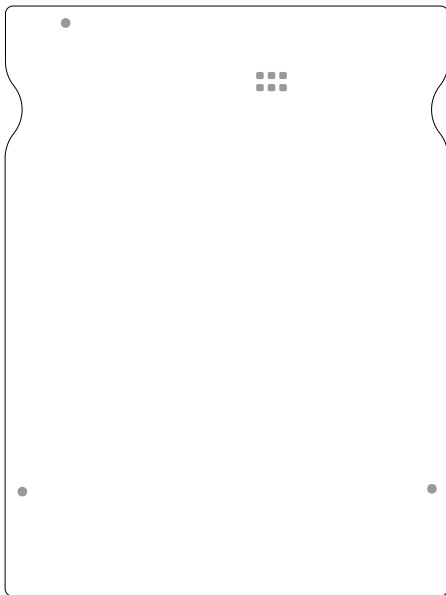


	TEXAS INSTRUMENTS	
	SILKTOP	LP-EM-CC2745R10-Q1 Rev. A
	DATE: 2024-02-15	



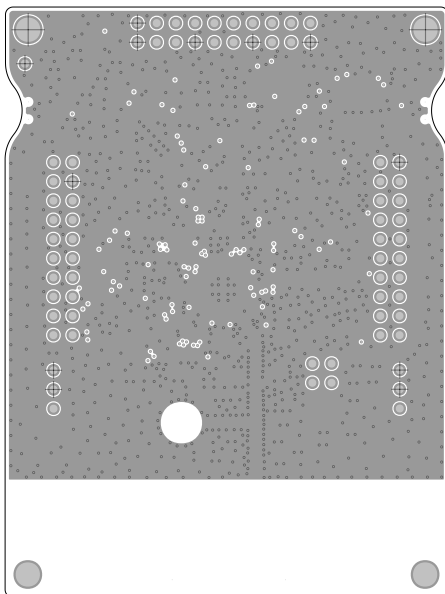
	TEXAS INSTRUMENTS	
	PM TOP	LP-EM-CC2745R10-01 Rev. A
	DATE: 2024-02-15	

ART FILM - paste_bottom

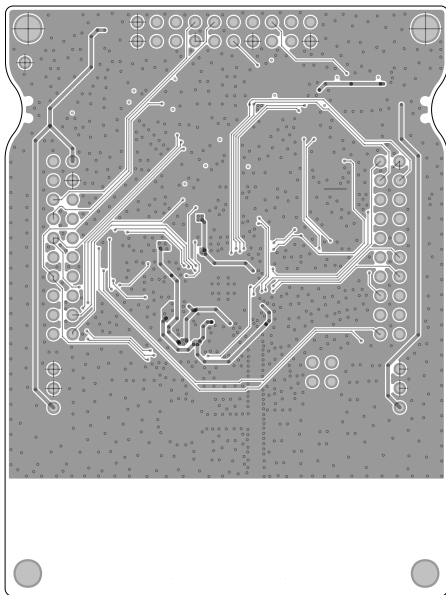


	TEXAS INSTRUMENTS	
	PM BOT	LP-EM-CC2745R10-01 Rev. A
	DATE: 2024-02-15	

ART FILM - paste_bottom



	TEXAS INSTRUMENTS	
	L2	LP-EM-CC2745R10-01 Rev. A
	DATE: 2024-02-15	



	TEXAS INSTRUMENTS	
	L3	LP-EM-CC2745R10-01 Rev. A
	DATE: 2024-02-15	